

Lansinoh®



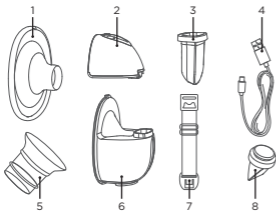
Lansinoh® Wearable Pump

INSTRUCTIONS FOR USE

Read all instructions before using the pump
and keep this manual for future reference.

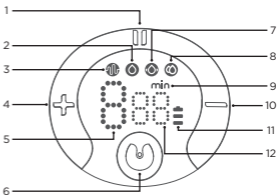
ENGLISH

What's in the box



1. Breast Cushion (24mm)
2. Pump Motor
3. Silicone Diaphragm
4. USB Charging Cable
5. Silicone Insert (21mm)
6. Milk Collector Cup
7. Bra Adjustment Buckle
8. Valve

LED Display & Features



1. Pause/Start Button
2. Expression Mode
3. Stimulation Mode
4. Suction Increase Button
5. Suction Level Display
6. Power Button/Mode Selection Button
7. Massage Mode
8. Automatic Mode
9. Time/Minute
10. Suction Decrease Button
11. Power Display
12. Time Display

Before First Use

Disassemble the pump, clean and disinfect the milk collector cup, the breast cushion, the valve, the silicone diaphragm, and silicone insert if necessary, prior to the first use. **DO NOT** wash the pump motor. It should be kept dry and never be rinsed or submerged in water.

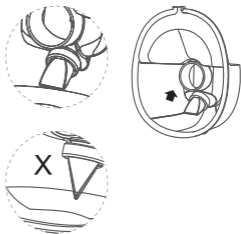
- Wipe down the pump motor, the keypad, and the surface of the pump with a low-level disinfectant such as Ethyl or Isopropyl alcohol (70-90%).
- Disassemble the milk collector parts and place all parts in a large pot.
- Cover the parts with water, making sure there is room for all the parts to be submerged in water in the pot.
- Bring the water to a boil and allow the parts to boil for 5 minutes. After boiling, remove the parts from the pot with tongs and place on a clean towel to dry, covering the parts with a second towel.
- Allow the parts to dry completely before assembly and use. Partially dried parts may affect the operation of the pump or could cause deterioration of the components.

Assembly

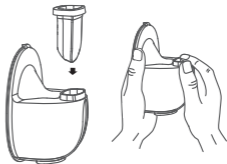
Always wash and dry hands thoroughly with soap and water before handling the wearable pump. Make sure that you follow the steps and assemble the pump correctly as instructed.

Caution: Visually inspect the individual components for cracks, chips, tears, discoloration, or deterioration. These may affect the functionality of the pump.

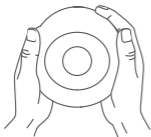
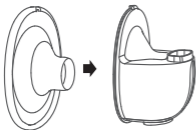
1. Install the valve to the milk collector cup, pay attention to the direction of installation.



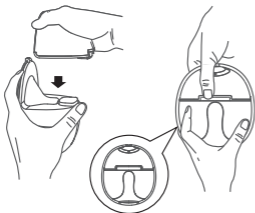
2. Put the silicone diaphragm into the milk collector cup and press it with your hands to make the edges faster tightly to ensure a perfect seal.



3. Install the breast cushion on the milk collector cup, make sure to align the diversion groove on the breast cushion with the corresponding groove on the milk collector cup, and then press the edges with both hands to ensure the seal is in place.



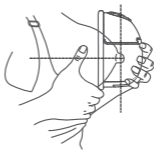
4. Install the pump motor, align the notch under the pump motor with the silicone diaphragm, and assemble it downward to fit the milk collector cup to ensure a complete seal.



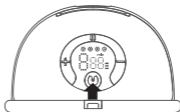
To Begin Pumping


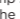

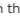
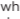
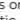
Before using the Lansinoh® Wearable Pump for the first time, please ensure the pump is fully charged. See **Battery Status Indicators** for details.

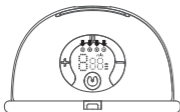
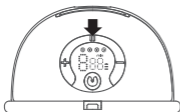
1. Always wash and dry hands thoroughly with soap and water before handling the pump.
2. Press the breast cushion firmly against your breast, ensuring there are no gaps, and your nipple is centered. Keep the pump upright. Be careful not to distort the position of the pump or your breast, as this will affect the pump's suction.



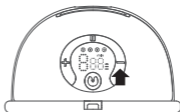
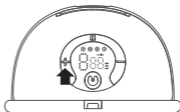
3. Press and hold the power button to start the breast pump.




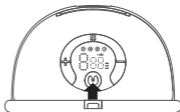
4. Quickly press the “” button to control the breast pump start and pause. Quickly press the “” button to switch modes after the breast pump starts. By pressing this button, you can choose from four modes: stimulation mode, expression mode, massage mode, and automatic mode. When the “” is lit, the stimulation mode is on; when the “” is lit, the expression mode is on; when the “” is lit, the massage mode is on; when the “” is lit, the automatic mode is on.



5. Each mode offers 9 suction levels. You can choose the suction level that feels most comfortable by pressing the “+” level up button and “-” level down button.



6. Press and hold the power button “” to turn off the breast pump.



- The breast pump has a built-in memory function. When you turn on the pump again, it will automatically shift to the mode you used last time.
- The breast pump will automatically stop after 20 minutes.

Warning: The breast pump does not function while it is charging.

Pumping Position

Relax and sit in a comfortable chair, lean slightly forward (use a cushion for back support). Make sure to keep the breast pump upright.



Sitting posture

Bra Adjustment Buckle

Adjust the length of the bra straps for more comfortable pumping. Attach one end of the bra adjustment buckle to the inside buckle of your nursing bra. Attach the other end of the bra adjustment buckle to your nursing bra's strap clip.



Cleaning After Each Use

DO NOT wash the pump motor. Wipe down the pump motor, the keypad, and the surface the pump with a low-level disinfectant such as Ethyl or Isopropyl alcohol (70-90%).

- Rinse all the milk collection parts with cold water immediately after each use. Place the parts in a clean wash basin used only for washing infant feeding equipment. Do not place the parts directly in the sink, because germs in sinks or drains could contaminate the parts.
- Hand wash the parts using warm soapy water. A nipple brush may be used to scrub the milk collector.
- Rinse the parts with running clean, warm water, or by submerging in fresh water in a separate basin that is used only for cleaning infant feeding items.
- Place the parts on a clean, unused dish towel or paper towel in an area protected from dirt and dust. Do not use a dish towel to rub or pat items dry. Partially dried parts may affect the operation of the pump or could cause deterioration of the components.
- Once the parts are dry, they can be stored in a clean plastic container with a lid or in a clean plastic zipper bag. Do not store the parts in a container or a bag until fully dry.
- Clean the wash basin and the nipple brush after each use following the manufacturers recommendation for cleaning. Rinse them well and allow them to air-dry after each use.

Note: Be careful when removing and cleaning the valve, and DO NOT insert any objects into the valve. If the valve is damaged, the breast pump will not work properly.

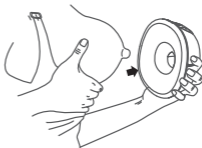
Battery Status Indicator

BATTERY STATUS INDICATOR DISPLAYED	OPERATING TIME REMAINING
3 bars	Approximately 100 minutes
2 bars	Approximately 70 minutes
1 bar	Approximately 30 minutes
1 bar flashing	Approximately 10 minutes

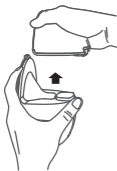
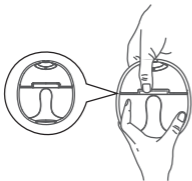
Finish Pumping & Transferring Breastmilk

After you finish pumping, carefully remove the pump from your breast. Keep the pump upright, then detach the pump motor and hold the milk collector parts to pour the milk into the storage container.

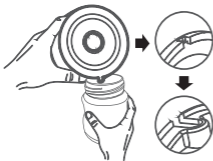
1. When you finish pumping, press and hold the power button to switch off the pump. Break the seal between your breast and the breast cushion with your finger, and then carefully remove the pump from your breast.



- Remove the pump motor from the milk collector. Clean the used parts according to the instructions.



- To transfer breast milk to a bottle or milk storage bag, pour the breast milk carefully into the selected storage container, ensuring the pouring slot is aligned with the opening.



Breastmilk Storage Guidelines

Check with your healthcare provider or an International Board Certified Lactation Consultant for specific storage instructions. When freezing, store in the back of the freezer and do not store milk in the door as temperature can fluctuate as the door is opened and closed. Date all breastmilk and use the oldest breastmilk first.

Note: DO NOT refreeze milk once it is thawed.

Thawing

Thaw frozen milk in the refrigerator or place the containers under cool running water, gradually warming the water until the milk is thawed. Thawed milk can be kept in a refrigerator for up to 24 hours. Breastmilk is not homogenized and you may notice that it separates as it sits. Gently swirl thawed milk before feeding to baby to mix the layers that have separated. Breastmilk can vary in colour and consistency depending upon the time of the day that the milk was expressed, what you have eaten, and the age of the baby at the time of pumping.

Note: DO NOT MICROWAVE HUMAN MILK! Microwaving alters the composition of the milk. Microwaving also may create "hot spots" in the milk that could burn the infant.

Note: DO NOT thaw breastmilk in hot or boiling water.

Technical Data

1. Power Supply

Battery operation: Rechargeable
Li Ion battery

Operating time: Approximately 100 minutes, depending battery freshness and pump settings

Pump power dissipation: 4 Watts maximum

Voltage regulation: Linear voltage regulator with low dropout voltage and short circuit protection

2. Control System

Control Unit: Microcontroller with integrated program memory

Program memory: 8K flash memory (ROM), 1K memory (RAM)

Human-machine interface: LED display, soft buttons

Selectable pumping style mode:
4 pumping style modes are selectable and controlled from buttons

Adjustable suction level: 9 suction levels are selectable and controlled from buttons

Suction vacuum level (Expression):
Minimum 120 mmHg, Maximum 280 mmHg

Warranty

Our guarantee covers any faults which affect the performance of the pump mechanism for 1 year and other product components of our breast pump for 90 days. This guarantee does not apply to cosmetic, accidental damage, improper use, incorrect voltage use, everyday wear and tear, faults or damage that are a result of your misuse of the pump, and pumps which have been modified or multiple-person use.

For health and hygiene reasons our breast pumps should not be re-sold, and our guarantee does not apply to any subsequent owners. Where your breast pump develops a fault that is covered by our guarantee we will repair or replace the breast pump or the affected parts. This may mean we provide one or more replacement parts to you. We may ask you to return the pump and/or faulty components for testing or repair purposes. To make a claim under this guarantee, you should tell us about the fault by contacting us at Lansinoh.co.uk/contact-us/. You will need to provide us with proof of purchase of the breast pump or parts. We will then notify you of next steps. YOUR STATUTORY RIGHTS ARE NOT AFFECTED. For more information on your rights contact your local consumer advice centre or go online. This guarantee is provided by Lansinoh Laboratories Inc, Ground Floor, West Mayesbrook House, Lawnswood Business Park, Leeds, LS16 6QY.

However, please note that due to the nature of this product being a personal care item, once it has been opened, it cannot be returned unless necessary. If you experience any problems with this product, please telephone our free customer service line at **+44 (0) 113 259 1425** in the UK or contact your country distributor. Our representative will be happy to assist you.
