

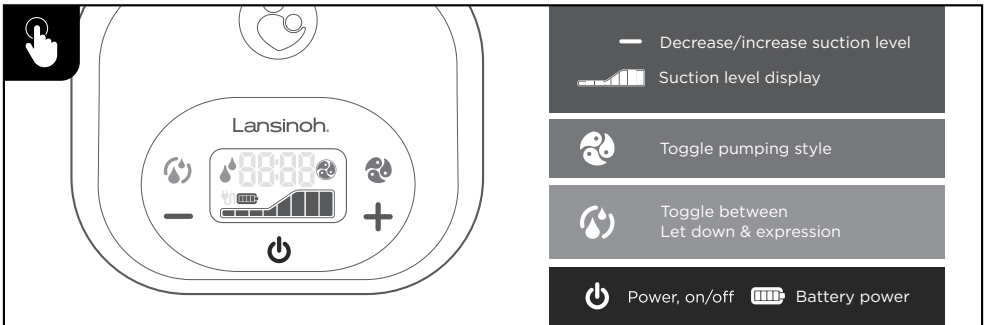
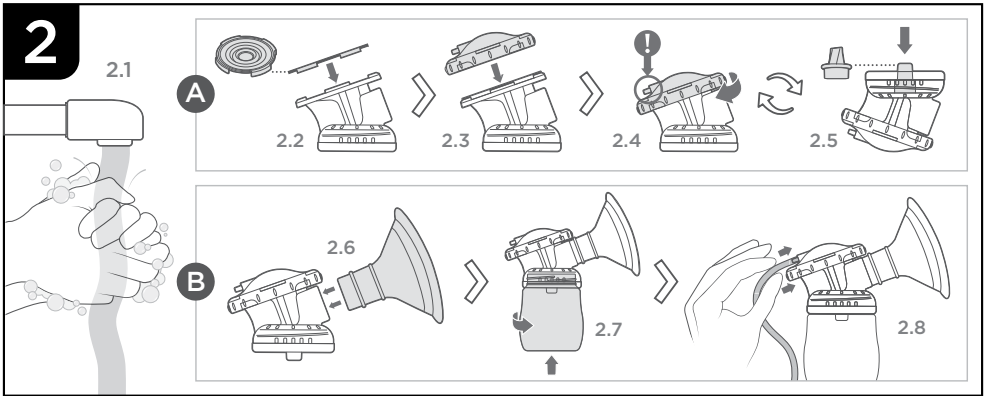
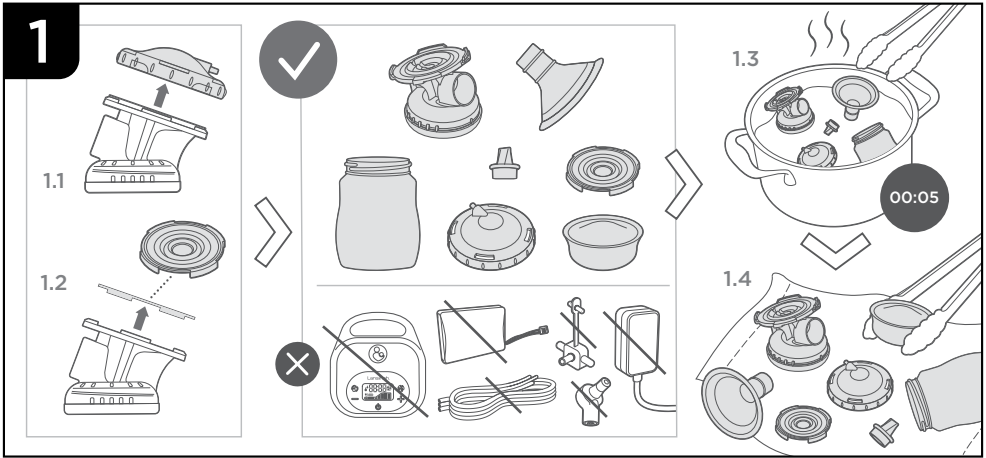
# Lansinoh®

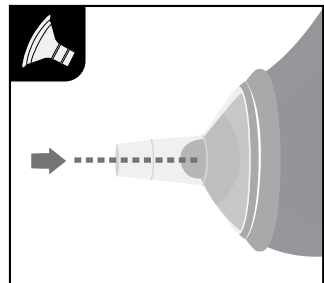
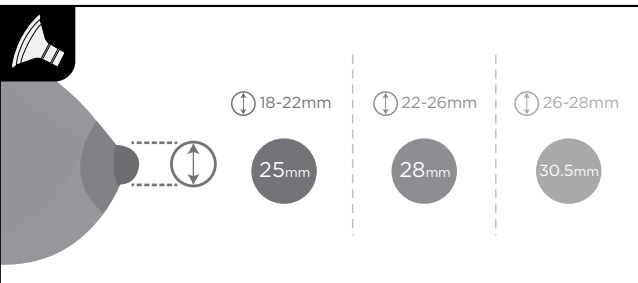
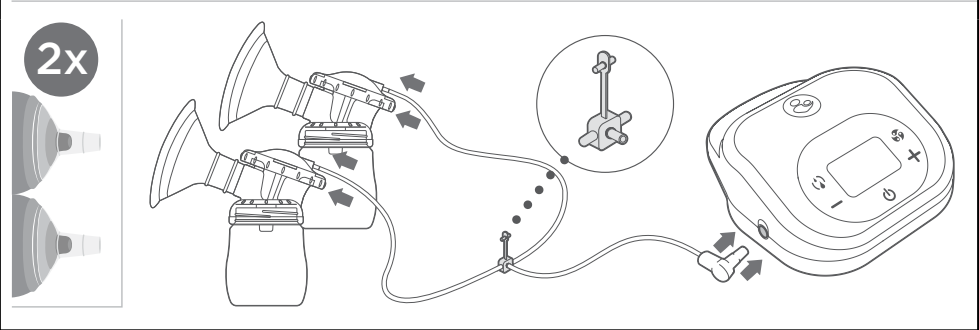
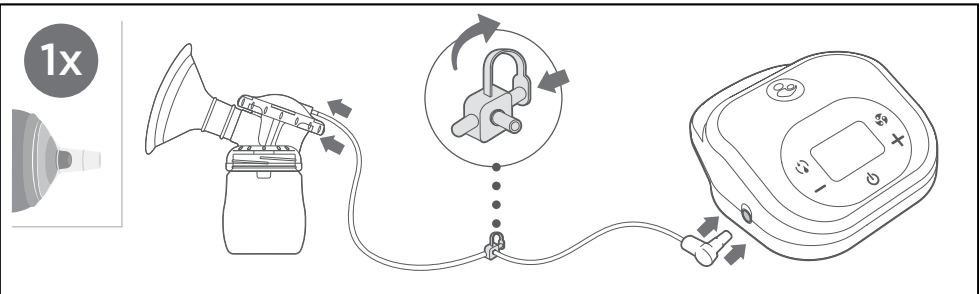
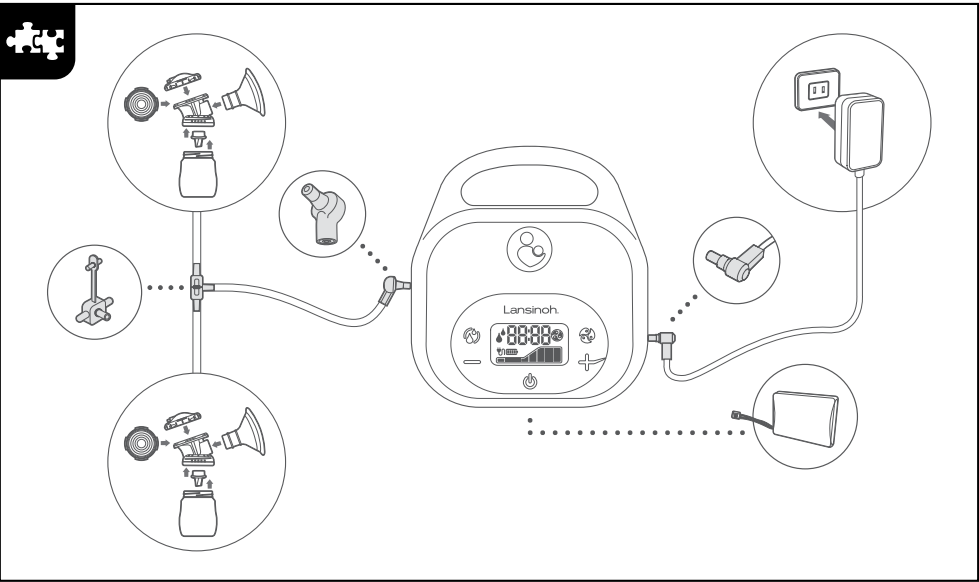


## Rechargeable Double Electric Breast Pump

**INSTRUCTIONS FOR USE**

# QUICK START GUIDE





# Table of Contents

[EN / ENGLISH] Rechargeable Double Electric Breast Pump Instructions for Use.....	1
[DE/ DEUTSCH] Elektrische Doppelmilchpumpe Gebrauchsanweisung .....	8
[TR/ TÜRKÇE] Şarj Edilebilir Çiftli Elektrikli Göğüs Pompası Kullanım Talimatları.....	15
[RO / ROMÂNĂ] Pompă de sâ n electricădublă, reîncărcabilă Instrucțiuni de utilizare.....	22
[HU / MAGYAR] Újratölthető dupla elektromos mellszívó Használati útmutató .....	29
[PL / POLSKI] Podwójny laktator elektryczny z zasilaniem akumulatorowym Instrukcja użytkowania.....	36

## ENGLISH

### Instructions for Use

#### Important Safeguards

##### Read All Instructions Before Using

Before first use, sanitize all parts that will come into contact with breastmilk according to the instructions in **Section 1. Prepping to Pump for the First Time**, page 1. Before each use visually inspect the individual components for cracks, chips, tears, discoloration, or deterioration. If damage to the device or components are observed, please discontinue use until the parts have been replaced. You may need a larger or smaller breast cushion. To order replacement parts or different size breast cushions please call +**(0)113 259 1425** or visit **Lansinoh.co.uk** for details in the UK. You can also contact your country distributor. Do NOT pump while pregnant. Pumping during pregnancy may trigger labour.

**Warning:** The Lansinoh® Rechargeable Double Electric Breast Pump is a personal care item. To prevent cross contamination/infection, tubing and breastmilk expression set should never be shared between mothers or re-sold from one mother to another. Each user should use their own pump. If you are a mother who is infected with: Hepatitis B, Hepatitis C, or Human Immunodeficiency Virus (HIV), pumping breastmilk using the Lansinoh® Rechargeable Double Electric Breast Pump will not reduce or remove the risk of transmitting the virus to your baby through your breastmilk.

When using electrical products, especially when children are present, basic safety precautions should always be maintained.

#### To reduce the risk of burns, electrocution, fire, or injury to persons:

- This product should never be left unattended when plugged in.
- Close supervision is necessary when this product is used near children.
- Use this product only for its intended use as described in this manual. Do not use attachments not recommended by the manufacturer.
- Repairs must be performed only by an authorized service agency. Do not repair yourself! No modifications to the device are permitted and will void the warranty.
- Never operate this product if it has a damaged cord or plug, if it is not working properly, if it has been dropped or damaged, or dropped into water.
- Keep the cord away from heated surfaces.
- Never use while sleeping or drowsy.
- Never drop or insert any object into any opening or tubing.
- Do not use this product if it is broken or any parts are missing.
- Do not allow small children or pets to play with the pump unit, pump components, rechargeable battery, or AC adapter.
- Do not use outdoors with the AC adapter, operate where aerosol spray products are being used, or where oxygen is being administered.
- If the power adapter casing or wiring becomes loose, separated, or frayed, stop use of the power adapter immediately.

#### To reduce the risk of electrocution:

- Always unplug this product immediately after using.
- Do not use while bathing.
- Do not place or store this product where it can fall or be pulled into a tub or sink.
- Do not place or drop pump or power adapter into water or other liquid.
- Do not reach for an electrical product that has fallen into water. Unplug immediately.

**Caution:** If discomfort is felt in your breast or nipple during the operation, insert a finger between the cushion and your breast to immediately break the suction. If irritation or discomfort occurs, discontinue use and see a doctor.

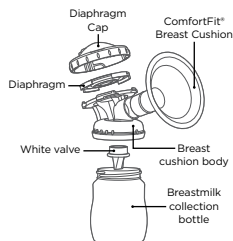
### CONTENTS

1. Prepping to Pump for the First Time
2. Assembling the Breastmilk Collection Set for Double or Single Pumping
3. Basic Controls, Display and Features
4. Breastmilk Storage Guidelines
5. Cleaning the Breastmilk Collection Set
6. Replacing the Rechargeable Battery
7. Troubleshooting
8. Technical Data
9. Warranty

## 1. Prepping to Pump for the First Time

### Cleaning of the Breastmilk Expression Set Before First Use

1. Always wash and dry hands thoroughly with soap and water before handling the breastmilk expression set.
2. Disassemble the breastmilk expression set and place parts in a large pot.
3. Cover the parts in water making sure there is room for all the parts to float freely in the pot.
4. Bring the water to a boil and allow the parts to boil for 5 minutes.

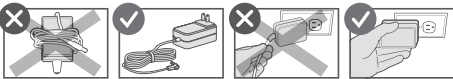
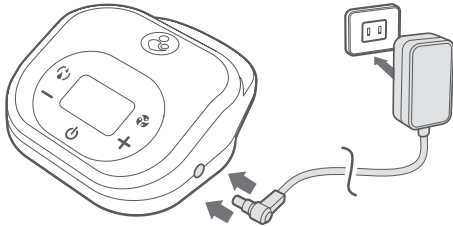


5. After boiling, remove the parts from the pot with tongs and place on a clean towel to dry, covering the parts with a second towel.
6. Allow the parts to dry completely before assembly and use. Partially dried parts may affect the operation of the pump.
7. Once parts are dry, they can be stored in a clean plastic container with a lid or in a clean plastic zipper bag.

### Charging the Battery for Cord Free Pumping

The Lansinoh® Rechargeable Battery comes installed in the pump body from the box. To pump cord free, the battery needs to be charged before your first pumping session.

1. Insert the AC adapter into the pump and plug into an electrical outlet.
2. The LCD screen will display the power adapter icon and the battery icon flashing to indicate charging in progress.
3. Leave the pump plugged-in and charging for a minimum of 3 hours before using it for cord-free pumping. The battery icon on the screen will show 4 bars when the pump is turned on and fully charged.



### Proper handling and safe storage instructions for the Rechargeable Battery

- Do not immerse the battery in water or allow it to get wet.
- Do not use or store the battery near sources of heat, such as a fire or heater.
- Do not use any chargers other than the AC adapter supplied with your pump.
- Do not connect the battery directly to wall outlets or car cigarette-lighter sockets.
- Do not pierce the battery casing with a nail or other sharp object, break it open with a hammer, or step on it.
- Do not strike, throw or subject the battery to physical shock, including dropping the battery onto a hard floor.
- Do not attempt to disassemble or modify the battery in any way.
- Do not place the battery in a microwave oven or pressurized container.
- Do not use the battery in combination with primary batteries (such as dry-cell batteries) or batteries of different capacity, type or brand.
- Do not use the battery if it gives off an odour, generates heat, becomes discoloured or deformed, or appears abnormal in any way. If the battery is in use or being recharged, remove it from the pump and discontinue use.

The battery should not be removed while the pump is plugged in, turned on, or expressing milk.

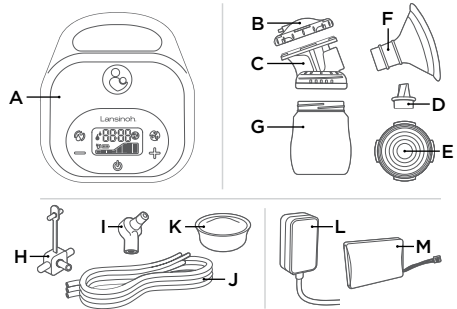
#### CAUTION!

- Do not use or store the battery where it is exposed to extreme heat, such as in a car in direct sunlight on a hot day. The battery may be overheated. This can also reduce battery performance and/or shorten service life.
- If the battery leaks and electrolyte gets in your eyes, do not rub them. Instead, rinse your eyes with clean running water and immediately seek medical attention – electrolyte can cause eye injury.
- Use the battery only under the following environmental conditions. Failure to do so can result in reduced performance or a shortened service life. Recharging the battery outside of these temperatures can cause the battery to overheat, explode or catch fire.

#### OPERATING ENVIRONMENT

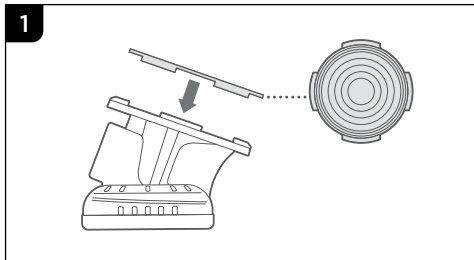
Operating Environment	Fahrenheit Conditions	Celsius Conditions
Charging the battery	32°F-113°F	0°C-45°C
Discharging the battery	-4°F-140°F	-20°C-60°C
Storage up to 90 days	-4°F-95°F	-20°C-35°C

## 2. Assembling the Breastmilk Collection Set for Double and Single Pumping

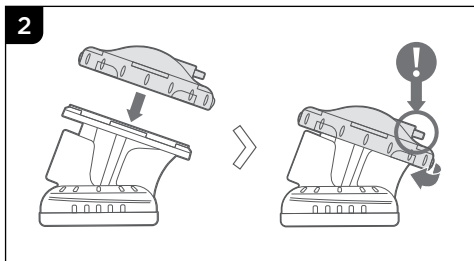


	NAME	ITEM NUMBER
A	Rechargeable Double Electric Breast Pump Body	53362
B	Diaphragm Cap (2x)	53410
C	Breast Cushion Body (2x)	53454
D	White Valve (2x)	53401
E	Silicone Diaphragm (2x)	53402
F	ComfortFit® Breast Cushion 25mm (2x)	53408
G	Breastmilk Collection Bottle (2x)	53562
H	Tubing Y Connector (1x)	53405
I	Pump Connector (1x)	53433
J	Silicone Tubing (2x 300mm, 1x 600mm)	53403
K	Bottle Storage Lid (2x)	53564
L	9V AC Multi Region Adaptor	53674
M	Rechargeable Lithium-ion Battery (1x)	53352

### Step by Step Assembly

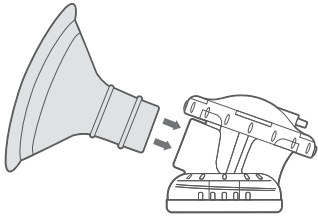


Place purple silicone diaphragm, the feet down, on the top of cushion body. Ensure diaphragm fits securely between rims of breast cushion body.



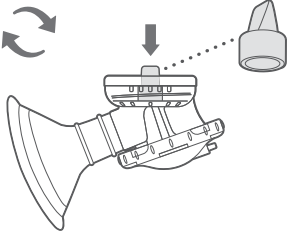
Place clear diaphragm cap over breast cushion body and twist to secure so that the tubing portal is facing the back of the pump.

3



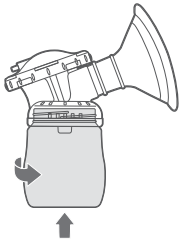
Firmly push ComfortFit® Breast Cushion into breast cushion body.

4



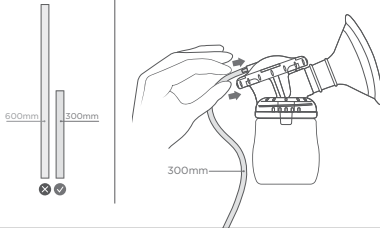
Holding the base of the white valve, gently secure the valve into the bottom of the breast cushion body.

5



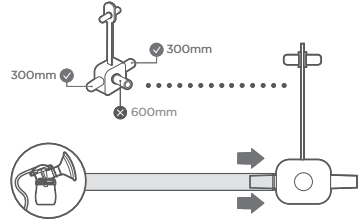
Screw the collection bottle onto the breast cushion body.

6



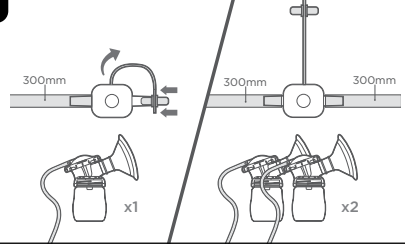
Attach end of 300mm tubing to back of diaphragm cap. Ensure that tubing is pushed all the way to the base of the attachment port and completely covers it.

7



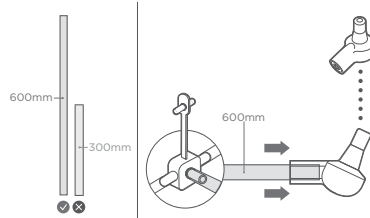
Attach the other end of the 300mm tubing to the Y connector.

8



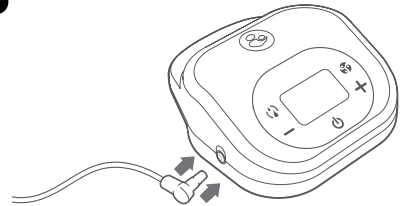
For single pump setup: Secure plug into open outlet of Y connector.  
For double pump setup: Repeat steps 1-7.

9

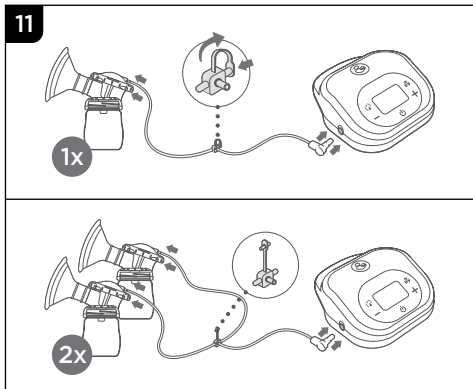


Secure one end of the 600mm tubing to the Y connector. Secure the other end of the 600mm tubing firmly to the pump connector.

10

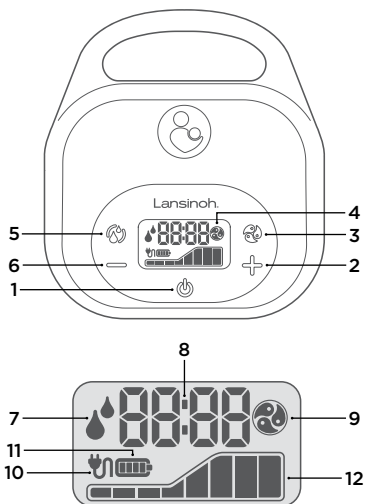


Insert pump connector into the opening on the left side of the pump body.



Setup for single and double pumping.

### 3. Basic Controls, Display and Features



1. Power, On/Off button (⏻)
2. Suction Level Increase Control Button (+)
3. Pumping Style Toggle Button (🌀)
4. LCD Display
5. Let-Down/Expression Toggle Button (⏸)
6. Suction Level Decrease Control Button (-)
7. Let-Down/Expression Phase Indicator
8. Time Display
9. Pumping Style Indicator
10. AC Power Indicator
11. Battery Power Indicator
12. Suction Level Indicator

#### Using Let-Down and Expression Phases

1. Press and hold the On/Off button to turn the pump on. The pump will always start in the let-down phase. For the very first time the pump will start in let-down phase, suction level 5.
2. After two minutes, the let-down phase will automatically change to the expression phase. For the very first time the pump will start in pumping style 2, suction level 3.
3. If you prefer to bypass the pre-set two-minute let-down phase or your milk lets down sooner than two minutes, press the Let-down/Expression Toggle button to move to the expression phase.
4. Automatic memory function will save the last pumping style and suction level for each phase. However, the suction level will gradually build to the last used setting for a more comfortable pumping experience. The style mode indicator will appear in the display to signify that you are in the expression phase.

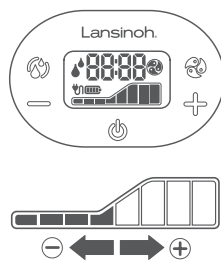
#### There are three different pumping styles to choose from. Pumping Style 1, Pumping Style 2, Pumping Style 3.

	Pumping Style 1	
	Pumping Style 2	
	Pumping Style 3	

1. With the pump in expression mode, select the pumping style that is most comfortable and efficient for you by pressing the Pumping Style Toggle button.
2. Pressing the button again will select the next pumping style.  
**Note:** The Pumping Style Toggle button only functions when the pump is in expression mode.
3. The mode will be shown on the LCD display by the pumping style mode indicator.

#### There are also eight levels of suction to choose from:

1. Adjust for stronger suction by pressing the Suction Level Increase Control button. Whenever the pump is switching to higher suction levels the targeted level will flash. The pump will slowly transition to the higher suction level. The flashing will stop once the targeted level is reached.
2. Adjust for lower suction by pressing the Suction Level Decrease Control button.
3. The current suction level will be indicated by the number of dark bars on suction level indicator.



**Note:** If at any time the suction on your breast reaches uncomfortable levels, reduce the suction level by pressing the Suction Level Decrease Control (-) button on the left side of the LCD screen or disconnect the tubing from the electric pump.

**Please note:** The LCD display light will automatically switch off if no control buttons are pressed for 20 seconds in order to save power. If the pump is left on and unattended for more than 60 minutes, the pump will automatically power off. If the pump is paused during a pumping session and left unattended for more than 20 minutes, the pump will automatically power off. To turn the pump back on, hold the On/Off power button for several seconds.

#### Completing Your Pumping Session

1. When a pumping session is finished, turn the pump off with the On/Off button.
2. After turning the pump off, the display will remain on for a few seconds.
3. Make sure there is no suction on the nipple(s) before removing the breast cushions from the breast. If necessary, break the suction by inserting a finger between the breast cushion and the breast. Once the suction is broken, the cushion can be removed safely.

## 4. Breastmilk Storage Guidelines

Check with your healthcare provider or an International Board Certified Lactation Consultant for specific storage instructions. When freezing, store in the back of the freezer and do not store milk in the door as temperature can fluctuate as the door is opened and closed. Date all breastmilk and use the oldest breastmilk first.

**Note:** DO NOT refreeze milk once it is thawed.

### Thawing

Thaw frozen milk in the refrigerator or place the containers under cool running water, gradually warming the water until the milk is thawed. Thawed milk can be kept in a refrigerator for up to 24 hours. Breastmilk is not homogenized and you may notice that it separates as it sits. Gently swirl thawed milk before feeding to baby to mix the layers that have separated. Breastmilk can vary in colour and consistency depending upon the time of the day that the milk was expressed, what you have eaten, and the age of the baby at the time of pumping.

**Note:** DO NOT MICROWAVE HUMAN MILK! Microwaving alters the composition of the milk. Microwaving also may create "hot spots" in the milk that could burn the infant.

**Note:** DO NOT thaw breastmilk in hot or boiling water.

## 5. Cleaning the Breastmilk Collection Set

Do not boil or wash tubing, Y connector, or pump connector!

Do not rinse or submerge pump base, tubes, connectors, or rechargeable battery in water!

### Cleaning the Breastmilk Expression Set After Each Use:

- Disassemble the breastmilk expression set, setting aside the tubing and connectors.
- Rinse all parts with cold water immediately after each use. Place pump parts in a clean wash basin used only for washing infant feeding equipment. Do not place pump parts directly in the sink, because germs in sinks or drains could contaminate the pump parts. The pump base, tubes, connectors, and rechargeable battery should never be rinsed or submerged in water. Wipe down the pump body, the keypad, display screen, and the surface the pump was placed on with a low-level disinfectant such as Ethyl or Isopropyl alcohol (70-90%). Wipe down the exterior of the tubing as needed, making sure not to get any disinfectant inside the tubes during cleaning.
- Hand wash all parts of the breastmilk expression set using warm, soapy water. A nipple brush may be used to scrub the hard plastic pieces of the breastmilk expression set but should not be used on the diaphragm.
- Rinse parts with running clean, warm water, or by submerging in fresh water in a separate basin that is used only for cleaning infant feeding items.
- Place pump parts on a clean, unused dish towel or paper towel in an area protected from dirt and dust. Do not use a dish towel to rub or pat items dry. Allow the parts to dry completely before assembly and use. Partially dried parts may affect the operation of the pump.
- Once parts are dry, they can be stored in a clean plastic container with a lid or in a clean plastic zipper bag.
- Clean wash basin and bottle brush. Rinse them well and allow them to air-dry after each use. Wash them by hand or in a dishwasher at least every few days.

### For Daily Sanitization of Breastmilk Expression Set:

Do not boil or wash tubing, Y connector, pump connector, battery, or power adapter!

- Place clean parts in a pot and cover with water making sure there is room for all the parts to float freely in the pot.
- Bring the water to a boil and allow the parts to boil for 5 minutes.
- After boiling, remove the parts from the pot with tongs and place on a clean towel to dry, covering the parts with a second clean towel. Do not use a dish towel to rub or pat items dry because doing so may transfer germs to the items.
- Allow the parts to dry completely before assembly and use. Partially dried parts may affect the operation of the pump.

### Before Each Use of Breastmilk Expression Set:

- Always wash and dry hands thoroughly with soap and water before handling the breastmilk expression set.
- Before assembling the breastmilk expression set, be sure that all the parts are completely dry.

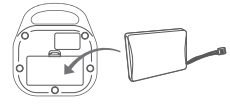
- Visually inspect the individual components for cracks, chips, tears, discoloration, or deterioration. These may affect the functionality of the pump.
- Inspect the tubing. If you find condensation in the air tube, wash and dry it immediately or replace the tubing. If you see breastmilk inside the tubing or tubing connectors do not attempt to wash, clean, or sanitize the tubing or tubing connectors.
- Should you have any questions or concerns about your parts please contact **+(0)113 259 1425** or visit **Lansinoh.co.uk** for details in the UK. You can also contact your country distributor.

**Warning:** It is highly recommended not to use any method other than the above-mentioned cleaning methods.

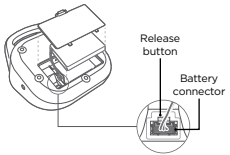
**Warning:** Use caution when cleaning the small white valve. It is important for proper suction. Do not use excessive force and do not clean with a baby bottle brush or a nipple brush. Gently wash by hand in hot, soapy water and rinse under hot running water.

## 6. Replacing the Rechargeable Battery

- Disconnect the AC power adapter and make sure the pump is turned off.
- Remove the battery cover on the pump base, by pressing battery cover locking tab downward, pulling tab back and lifting cover from pump body.
- Disconnect existing battery for Lansinoh® approved/supplied replacement only.



- While keeping wires attached to pump and battery, gently remove battery from pump body exposing the battery connector.
  - Press the battery connector locking tab downward while gently pulling wires.
  - Fully remove and properly dispose of old battery.
- Install Lansinoh® Rechargeable Battery
    - Align battery connector tab with pump connector slot.
    - Press connector fully into place.
    - Gently tug on wires to confirm battery connector is fully installed.
  - Place battery into battery compartment. The battery can be placed in one of two positions with the wires at either the top or bottom.
    - Ensure battery wires are placed either at the top or bottom of battery compartment making sure wires do not interfere with pump body.
    - Ensure battery wires will not interfere with the battery cover by gently pressing the wires into battery compartment.
  - Reinstall Battery Cover
    - Slide the two battery cover bottom tabs into the housing slots.
    - Lower the battery cover into position.
    - Complete the battery cover installation by pressing the battery cover locking tab until cover surface matches with the pump body surface. When properly installed the battery cover tab will snap into place. An audible click will be heard.
  - After replacing battery, dispose of used battery in accordance with local regulations.



## 7. Troubleshooting

### Pump Has No Power

- Power adapter is not properly connected. Verify the power cord is still plugged into the pump and the wall.
- Battery is not properly connected. Verify the battery connector is fully inserted.
- Battery is drained. Plug the pump into an external power source and charge the pump for 3 hours.
- If the pump is still not powering up, please contact Lansinoh® Customer Service by calling **+(0)113 259 1425** or emailing **Lansinoh.co.uk**.



### Interruption of Electrical Service

If you experience an interruption in the normal operation of the electrical and/or mechanical function of the pump, simply do the following:

- Verify the power cord is still plugged into the pump and the wall.
- If using the rechargeable battery, verify the battery connector is fully inserted and that the battery is properly charged.
- If either the power cord or battery became disconnected, fix the connection then press and hold the power button to turn the pump on.
- If the pump is shutting off and the power adapter and battery were properly connected, then please contact Lansinoh® Customer Service by calling +(0)113 259 1425 or emailing [Lansinoh.co.uk](mailto:Lansinoh.co.uk).

## 8. Technical Data

### 1. Power Supply

**Battery operation:** Rechargeable Li Ion battery

**Operating time:** Battery life is approximately 3 hours when pump is running at max settings. Results are dependent on battery freshness and pump settings

**AC Adapter operation:** 100-240VAC wall plug type AC adapter, galvanically isolated with 9VDC output voltage

**Pump power dissipation:** 15 Watts maximum

**Voltage regulation:** Linear voltage regulator with low dropout voltage and short circuit protection

### 2. Control System

**Control Unit:** Microcontroller with internal program memory

**Program memory:** 32K flash ROM, 2K RAM memory

**HMI:** LCD display with LED backlight, soft keypad

**Single/double control:** Single or double breast pumping possible

**Selectable pumping style mode:** 3 pumping style modes are selectable and controlled from keypad

**Adjustable suction level:** 8 suction levels are selectable and controlled from pump keypad

**Suction vacuum level (Express/Double pumping):** Minimum 100 mmHg, Maximum 280mmHg

### 3. Power Requirements

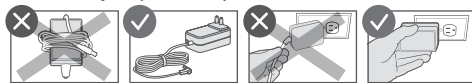
**AC Adapter (included):** Multi-region AC Adapter - EU and UK Plug Configuration 100-240VAC wall plug type AC adapter, galvanically isolated adapter with 9VDC output voltage. The expected use-life of the pump is 500 hours

For products with an input ground pin, locate near an area accessible to a properly grounded outlet receptacle

SYMBOLS	MEANING OF THE SYMBOLS
	Follow instructions for use
	Identifies the manufacturer
	Indicates the date of manufacture
	Type BF applied part
	Class II equipment
	Keep the device dry
	Keep the device away from sunlight
	Indicates the temperature limitation for operation, transport and storage

SYMBOLS	MEANING OF THE SYMBOLS
	Indicates the humidity limitation for operation, transport and storage
	Indicates the atmospheric pressure limitation for operation, transport and storage
<b>IP22</b>	Indicates the protection against ingress of solid foreign objects and against harmful effects due to the ingress of water
	This pump is made of various metal and plastics. Before disposal, the device is to be rendered unusable and it must be disposed of as sorted waste in accordance with local waste electrical and electronic equipment regulations. To avoid the harmful effects on the environment and public health align with your defined local return and collection rules for waste electrical and electronic equipment (incl. batteries)
	Indicates that the packaging contains products intended to come in contact with food
	Indicates to handle the fragile device with care
	Indicates that a specific separate power adapter is required for connecting the device to the supply mains and specifies its model/type
<b>CE</b>	CE marking indicates that a product has been assessed by the manufacturer and deemed to meet EU safety, health and environmental protection requirements
	Keep out of reach of children
	Install battery the correct orientation
	Keep metal away from the battery ends
	Do not use metal tools to touch or open battery
	Battery can be recycled
	Do not throw battery into fire
	Number 20 inside the universal recycling symbol represents items made of cardboard. Cardboard is recyclable, but not all locales accept it
	Guarantees that packaging with this symbol is recyclable and will be accepted by cardboard recyclers
	This symbol indicates that the power adaptor is for indoor use only

### To maintain your power adapter follow these instructions:



DO NOT wrap cord of power adapter around the plug body.

CORRECT

DO NOT unplug power adapter by pulling on the cord.

CORRECT

DO NOT use power adapter if damaged.

**Warning:** Children have STRANGLED in cords. Keep the cords out of the reach of children.

### Lithium Battery

The battery used in the device may present a risk of fire or chemical burns if not used properly. Do not disassemble, heat, incinerate or dispose of battery in fire.

Dispose of battery in accordance with local regulations.

RECHARGEABLE BATTERY: 7.4V, 1500MAH, LITHIUM ION	
Battery indicator displayed with 4 bars	Operating time remaining: Approximately 3 hours
Battery indicator displayed with 1 bar	Operating time remaining: Approximately 1 hours
Battery indicator flashing	Operating time remaining: Approximately 0.5 hours

## 9. Warranty

Our guarantee covers any faults which affect the performance of the pump mechanism for 1 year and other product components of our breast pump for 90 days. This guarantee does not apply to cosmetic, accidental damage, improper use, incorrect voltage use, everyday wear and tear, faults or damage that are a result of your misuse of the pump, and pumps which have been modified or multiple-person use.

For health and hygiene reasons our breast pumps should not be re-sold, and our guarantee does not apply to any subsequent owners. Where your breast pump develops a fault that is covered by our guarantee we will repair or replace the breast pump or the affected parts. This may mean we provide one or more replacement parts to you. We may ask you to return the pump and/or faulty components for testing or repair. To make a claim under this guarantee, you should tell us about the fault by contacting us at [Lansinoh.co.uk/contact-us/](http://Lansinoh.co.uk/contact-us/). You will need to provide us with proof of purchase of the breast pump or parts. We will then notify you of next steps. **YOUR STATUTORY RIGHTS ARE NOT AFFECTED.** For more information on your rights contact your local consumer advice centre or go online. This guarantee is provided by Lansinoh Laboratories Inc, Ground Floor, West Mayesbrook House, Lawnswood Business Park, Leeds, LS16 6QY.

This product is a personal care product and therefore cannot be returned once opened. If you experience any problems with this product, please telephone our free customer service line at **+44 (0) 113 259 1425** in the UK or contact your country distributor. Our representative will be happy to assist you.